

Welcome to The Henry Jones Art Hotel. This edition of our art newsletter will keep you up to date with new artwork arriving at the hotel and upcoming local art events that may be of interest to you. Being right on Hobart's waterfront means we're in the heart of Hobart's cultural precinct, with close proximity to visual arts, theatre, the home of Tasmanian Symphony Orchestra & other live music, and seasonal festivals. Our Reception team are always on hand to assist if you're interested in purchasing a Tasmanian artwork to take home and love sharing knowledge on our artists & affiliated galleries. From all of us at The Henry Jones, we sincerely hope your visit is memorable and you leave with a stronger connection to this vibrant place we call home.

- Emine Lewis, Art Curator

THE ROOFTOP OF YOUR MIND BY DONNA LOUGHER

This series of artworks by Hobart-based artists Donna Lougher are a surreal reminder of the current state of the world. The once bustling city has slowed, resuming its "old town" vibe, with many office jobs being undertaken at home and the local Tourism sector running on a thread.

Donna's recent paintings of Hobart are created from the views from her studio in the middle of the city. The studio was previously prime office space and is now inhabited artists, fashion designers and filmmakers, morphing the once privileged yet mundane space into buzzing hub of creativity. Recording the current buildings in earthy tones, these huge structures looming over what once was, the indigenous history of the place never far from Donna's mind.

Donna's artworks can be found at the hotel reception.



Tilt, 2020, acrylic on canvas, 87 x 137cm,
\$2,750, located in the hotel reception,
courtesy of Colville Gallery.

WABI-SABI BONES BY STEPH HOUSTEIN

In this latest series, Steph Houstein confronts her physical decline and limitations of living with MS. She does this through the title of the artwork, the bold compositions and the very physical nature of creating the artwork itself. The title *Wabi-Sabi* is a Japanese aesthetic, which loosely means 'embracing the imperfect'. This sums up the way Steph now has to approach her practice and her daily life.

Steph is a highly dedicated and accomplished artist, with a large following of collectors around the world, and it's not difficult to understand why. Her intricate yet bold compositions are layered with various mediums, techniques and meanings.

These beautiful bright artworks are exactly what we need in our lives right now! Check them out before they sell out, located in the IXL Long Bar, 2nd floor corridor and the hotel print rack.



Wabi-Sabi 22, Silkscreen print and mixed media, 56 x 76cm, \$990 framed, located in the IXL Long Bar.

THE ARVE, A STEREO WINDOW BY LUISA ROMEO

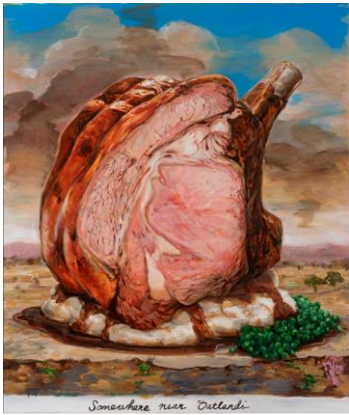
When wandering the hotel's second floor corridor you will most likely come across a stunning new artwork by Luisa Romeo. The *Arve, a stereo window*, provides the viewer with a portal to escape into a void into the Tasmanian wilderness, a safe and peaceful place to let go of your worries.

Luisa Romeo was born in Melbourne to Italian migrants. Her art practice began when she was able to grip a pencil between her fingers. Drawing has always been a daily activity where she could express her dreams, ideas and perception of life. As the years streamed by, her artistic expression grounded her as an individual.

Further artworks by Luisa can be found in the hotel print rack and via the hotel's online art catalogue.



The Arve, a stereo window, 2020, oil on linen
161 x 161cm, located on the 2nd floor corridor
\$5,500 (in association with Handmark Gallery).



THE GLOVER PRIZE 2020

Celebrating the legacy of John Glover, The John Glover Art Prize (Glover Prize) has become one of Australia's most significant awards for landscape painting, open to artists from anywhere in the world. It is awarded annually by The John Glover Society Inc. for the work judged the best contemporary landscape painting of Tasmania. Landscape painting is defined in its broadest sense. The aim is to stimulate conversations about the meaning and possibilities expressed in the words *landscape*, *painting* and *Tasmania*, and this year's winner has certainly done that!

The 2020 winner of the Glover Prize is local artist Robert O'Connor for his quirky oil painting 'Somewhere in the Midlands'. Robert presents the viewer with an Instagram-worthy rack of lamb (an iconic Australian dish), which has likely been grown on stolen land, using unsustainable farming practices, which have destroyed the native ecosystems and culture of Tasmania. This artwork raises a lot of questions about the 'pure' status of Tasmania.

The prize was awarded back in March but we're excited to finally have the opportunity to display it now that Covid-19 restrictions have eased and Landscape Restaurant is open again.

The 2020 Glover Prize Winner: 'Somewhere in the Midlands' by Robert O'Connor. Currently on display in Landscape Restaurant.

JACOB LEARY – STACKED PAPER CUT

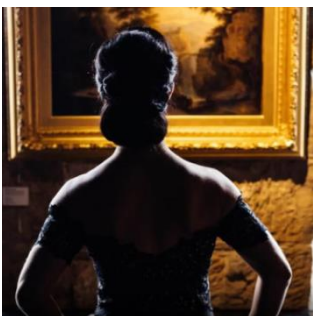
Jacob Leary is a multi-disciplinary artist with a practice spanning a range of mediums including painting, prints, video and installation. His tendency toward the dynamic has fed his preoccupation with assemblage.

The latest artworks to grace the walls of the Henry Jones Art Hotel are a series of stacked paper cut assemblages, currently located in the IXL Long Bar. They are part of a larger series of papercut-based works exploring the relationship between man and machine, chaos and logic.

The blueprint for each form is generated by a computer-based algorithm, which Jacob inputs into a machine to cut the paper beforehand gluing each sheet together to form stacks. The perfect collaboration between machine and man.



JACOB LEARY, *Smooth Space (positive)*, stacked paper cut artwork, 33 x 33cm, \$2,500, located in the IXL Long Bar



THE HENRY JONES ART & HISTORY TOUR

Daily *Art & History Tours* commence at 5pm Fridays and 4pm Saturdays from reception. Join our dedicated Henry Jones Art and History Liaisons for an informal introduction to the historic hotel as you wander through the old jam factory buildings, taking in the IXL story, the hotel's unique development and the Tasmanian artworks on display.

The tour is complimentary to in-house guests and includes a glass of sparkling at the start of the tour. BOOKINGS ESSENTIAL as numbers are limited, contact reception on 03 6210 7700.

► We are registered for COLLECT, an interest-free loan program that enables you to purchase artworks. So please do keep that in mind as you wander about admiring the many pieces available for sale! Ask for details at reception or online at <http://www.collect-art.com.au/>



Stay in touch:
@thehenryjones
#thehenryjonesarthotel